



# **Draft District Export Action Plan: Koppal**

**October 2021**

## Contents

<b>1. Introduction</b>	3
<b>2. District Profile</b>	4
2.1 Geography	4
2.2 Flora and Fauna	5
2.3 Natural Resources of the District	5
2.4 Demography	6
<b>3 Tourism</b>	7
<b>4 Economic Indicators of the District</b>	9
<b>5 Industrial Profile</b>	10
5.1 Infrastructure	10
5.2 Industry	12
5.3 Key Players	12
<b>6 Industrial Areas/ Estates</b>	13
6.1 Industrial Areas	13
6.2 Industrial Estates	13
<b>7 SWOT Analysis of Koppal</b>	14
<b>8 District as an Export Hub</b>	15
<b>9 Institutional Mechanism &amp; Responsibility</b>	15
<b>10. Export Scenario</b>	17
10.1 State Exports	17
10.2 District Exports	18
10.3 One District One Product (ODOP)	18
10.4 Identification of District Export Basket	19
10.5 Product Export Promotion Strategy	20
<b>11 Promising Sector</b>	20
<b>12 Potential Investment Opportunities</b>	21
12.1 Opportunities in Toys	21
12.2 Opportunities in Iron and Steel	21
12.3 Opportunities in Agriculture	21
<b>13 GI Product</b>	22
<b>14 Strategy and Action Plan</b>	23

## 1. Introduction <sup>1</sup>

Koppal, earlier known as Kopana Nagara is carved out of Raichur district. Koppal District is located in the northern interior of Karnataka with borders with districts of Raichur, Bagalkot, Gadag, and Bellary. The district is popular for its temples and key tourist destinations includes Anegundi, Koppal Fort, Pampa Sarovar Lake.

Figure 1 District Map of Koppal



Koppal is also known for its historical significance with Anegundi of Gangavathi Taluk, which was the first capital of great Vijayanagara Dynasty. The region was also ruled by Shathavahanas, Gangas, Hoysalas and Chalukya Dynasties. Later, Koppal was

<sup>1</sup> <https://koppal.nic.in>

part of the Nizam of Hyderabad till independence. Hyderabad-Karnataka got independence from Nizam on 18th September 1948. Since then, Koppal District was considered to be part of Raichur District of Gulbarga Revenue Division. The name of the district has been found in literature and poetic work during the reign of Nrupathunga 814-878 AD.

Koppal is rich in agricultural produce and has a marketing committee at Gangavati region. Few of the potential Agri-produce in the districts are rice, maize, jowar and bajra, and fruits like pomegranate and grapes.

Koppal has 7 Talukas where four talukas Koppal, Gangavathi, Kushtagi, Yelburga are existing ones and three talukas namely Kanakagiri, Karatagi and Kukanoor were created in 2018.

## **2. District Profile**

### **2.1 Geography <sup>2</sup>**

Koppal district is located in the northern interior of Karnataka with an area of 8,458 sq km. The district was carved out of Raichur District. The district is located between situated between 15° 09' 00" to 16° 03' 30" North Latitude and 75° 47' 30" to 76° 48' 10" East Longitude.

The district shares its border with Raichur district in the east, Koppal district in the West, Bagalkot district in the north, Bellary district in the south.

---

<sup>2</sup> Google Maps

### Latitude and Longitude of the Taluks

S. No.	Taluks	Latitude	Longitude
1	Koppal	15.3505° N	76.1567° E
2	Gangavathi	15.4319° N	76.5281° E
3	Kushtagi	15.7519° N	76.1929° E
4	Yelburga	15.6142° N	76.0131° E
5	Kanakagiri	15.5711° N	76.4187° E
6	Karatagi	15.6050° N	76.6596° E
7	Kukanoor	15.4912° N	75.9942° E

Source: Google maps

## 2.2 Flora and Fauna

The location of the Koppal forest division is towards north-east of Karnataka state. The limits of Koppal forest division are the same as those of Koppal district. The total forest area of the division has been recorded as 43,066 hectares. This forms about 7.64 of the geographical area of the division (5,630 Km<sup>2</sup>). Most of the forest areas in the division are deciduous scrub type. The division has rocks and boulders with sparse dry scrub jungle. The division provides habitat for Indian sloth bear, wolves, Jackal, Deers, Snakes, Scorpio, wild duck, quails. However, animals belonging to the family of big game variety such as tigers, leopards are almost extinct.

## 2.3 Natural Resources of the District<sup>3</sup>

The details of the natural resources present in Koppal is given below in Table 1:

Table 1: Natural Resource of the District

Natural Resources	Key Features
Crops	Paddy, Bajra, Maize, Jowar, Tur, Black gram, Green gram and Cowpea and Groundnut
Cash crops	Sugar Cane, Groundnut, Sunflower, Beetle vine, Coconut oil and Palm Oil

<sup>3</sup> <https://koppal.nic.in> and [www.investkarnataka.co.in/wp-content/uploads/2020/08/Koppal.pdf](http://www.investkarnataka.co.in/wp-content/uploads/2020/08/Koppal.pdf)

<b>Mineral resources</b>	Syenite brittle, Coronado stone, Green quartz and Building stone
<b>Horticulture</b>	Marigold, Jasmine and fruits such as Mango, Grapes and Pomegranate

Source: District website

## 2.4 Demography

### Population<sup>4</sup>

The total population of the district as per Census 2011 was been recorded as 13,89,920. The contribution of male population was 6,99,926 and female population was 6,89,994.

Table 2: Population

Population of Koppal	
	2011
<b>Total Population</b>	13,89,920
<b>Male Population</b>	6,99,926
<b>Female Population</b>	6,89,994

Source: As per Census 2011

### Demography at a Glance<sup>5</sup>

The total area of Koppal is 8458 sq. km with 7 taluks. The sex ratio of the district is 958 Females per 1000 males. The literacy rate for Koppal district is 68.09 per cent as per Census 2011. The details of the demography is given below:

Table 3 Demography

Demographic Label	Value
<b>Area</b>	8,458 sq km
<b>Number of Hoblis</b>	20
<b>Number of Gram Panchayats</b>	153
<b>Number of Villages</b>	629
<b>Number of Municipalities</b>	9

<sup>4</sup> Census 2011

<sup>5</sup> <https://koppal.nic.in> and [www.censusindia.gov.in/2011census/dchb/2906\\_PART\\_A\\_DCHB\\_KOPPAL.pdf](http://www.censusindia.gov.in/2011census/dchb/2906_PART_A_DCHB_KOPPAL.pdf)



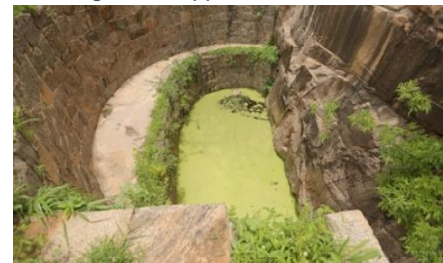
Demographic Label	Value
Taluks	7
Sex Ratio	958 female per 1000 male
Literacy rate	68.09 per cent

Source: District website, Census 2011 and Mysuru District Statistics at a Glance 2019-2020

### 3 Tourism<sup>6</sup>

- i. **Koppal Fort:** The Koppal Fort was acquired by Tippu Sultan in 1786 AD from a Paleyagar. Tippu Sultan rebuilt the fort into one of the strongest forts with the help of French engineers. The fort was later captured by British and the Nizam.

Figure 2 Koppal Fort



- ii. **Kanakachalapathi temple (Kanakagiri):** Kanakagiri is located 20 km north west to Gangavati town in Koppal district. The temple is dedicated to Lord Vishnu. The archaeological structures and discovery of inscriptions from Emperor Ashoka rule makes the temple one of the significant tourist attraction.

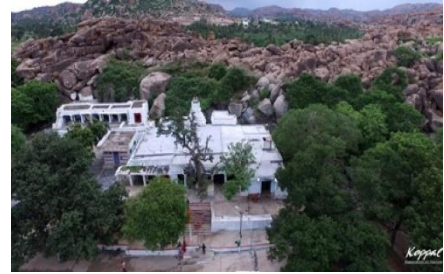
Figure 3 Kanakachalapathi Temple



<sup>6</sup> [www.investkarnataka.co.in/wp-content/uploads/2020/08/Koppal.pdf](http://www.investkarnataka.co.in/wp-content/uploads/2020/08/Koppal.pdf) and [www.koppal.nic.in/en/tourist-places/](http://www.koppal.nic.in/en/tourist-places/)

- iii. **Pampa Sarovar:** Pampa Sarovar is one of the five sacred sarovars, or lakes in India. As per Hindu mythology, Pampa Sarovar is considered as the place where Pampa (a form of Shiva's consort Parvati) has performed penance to show her devotion to Shiva.

*Figure 4 Pampa Sarovar*



- iv. **Mahadeva Temple:** The temple was built in 1112 CE using soapstone. The Mahadeva Temple is located in Itagi town in Yelburga Taluk of the district. The Mahadeva Temple was built as a prototype of the the Amruteshwara Temple (first temple, constructed using soapstone).

*Figure 5 Mahadeva Temple*



- v. **Munirabada Dam-** Munirabad is a small village in Koppal town. The dam is known for its location. As per hindu mythology, dam is situated in Rishyamookh Hill, where Lord Rama and Hanuman met for the first time.

*Figure 6 Munirabada Dam*





- vi. **Anjanadri Hills**– The place is known for Hindu mythology. It is said that Lord Hanumana was born in Anjaneya hill in Hampi town. The temple is situated on the top of the hills which is dedicated to Lord Hanuman on top of the hill.

Figure 7 Anjanadri Hills



#### 4 Economic Indicators of the District

Koppal contributes 1.16% to Karnataka's total GSDP and 1.11% to Net State Domestic Product (NSDP). District's Per capita income is Rs. 100497 (2018-19). The details of economic indicators of Koppal is given in below Table 4:

Table 4 Economic Profile of the District

Particulars	Current Prices (2018-19) INR Cr.	Constant Prices (INR. Cr.)
Gross District Domestic Product (GDDP)	17291	12265
Net District Domestic Product (NDDP)	14994	10418

Source: Source: Economic Survey of Karnataka 2020. (Contribution calculated on current prices only)

#### 4.1 Primary, Secondary & Tertiary Sector

Tertiary sector contributes 52.4%, followed by Secondary sector contributing 20.8% and primary sector contributing 26.8% respectively to the total contribution as per the current prices. The sectoral contribution to Net District Income at current and constant (2011-12) prices for the year 2018-19 is highlighted in Table 5:

Table 5: Sectoral Bifurcation of Koppal

Sector	Current Prices	Constant Prices	Contribution
	2018-19 (INR Cr.)	(2011-12) (INR Cr.)	2018-19 (In %)
Primary	3577	2089	26.8

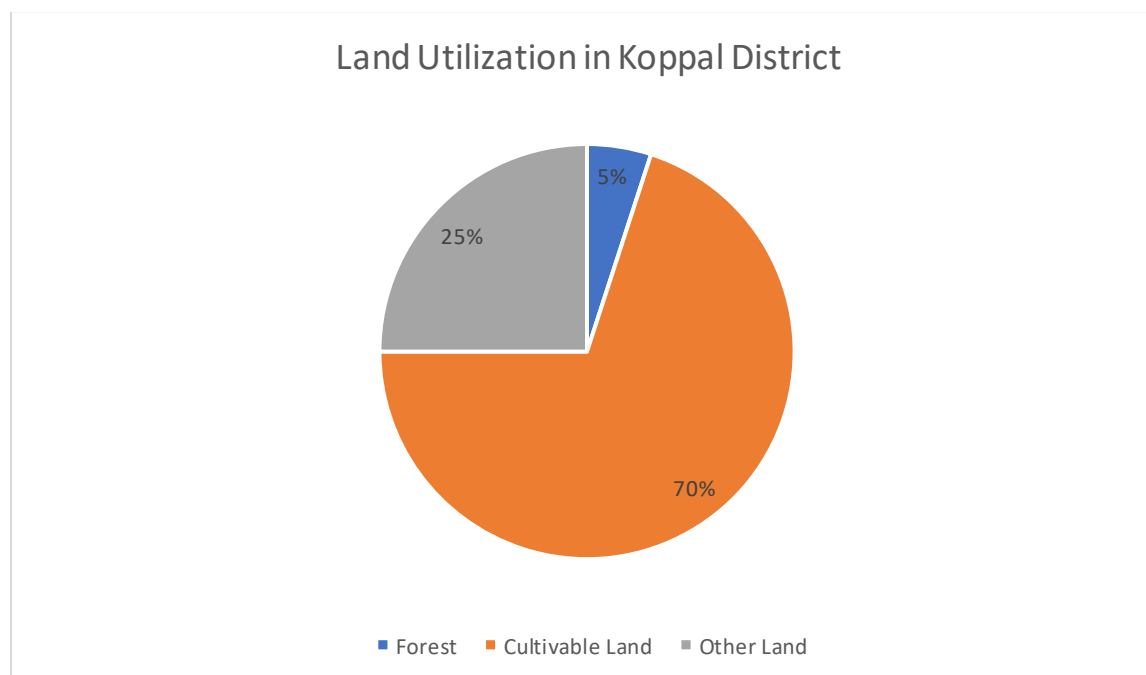
Sector	Current Prices	Constant Prices	Contribution
	2018-19 (INR Cr.)	(2011-12) (INR Cr.)	2018-19 (In %)
Secondary	2779	2247	20.8
Tertiary	7003	4709	52.4
<b>Total</b>	<b>13359</b>	<b>9044</b>	<b>100</b>

Source: Economic Survey of Karnataka 2020. (Contribution calculated on current prices only)

## 4.2 Land Utilization

Koppal has land utilization of 5% for forest, 70% for cultivation and 25% for others. This shows the significance of Agri sector for Koppal and opportunities.

Figure 8 Land Utilization



Source: Invest Karnataka

## 5 Industrial Profile

### 5.1 Infrastructure<sup>7</sup>

<sup>7</sup> Invest Karnataka

## i. **Connectivity**

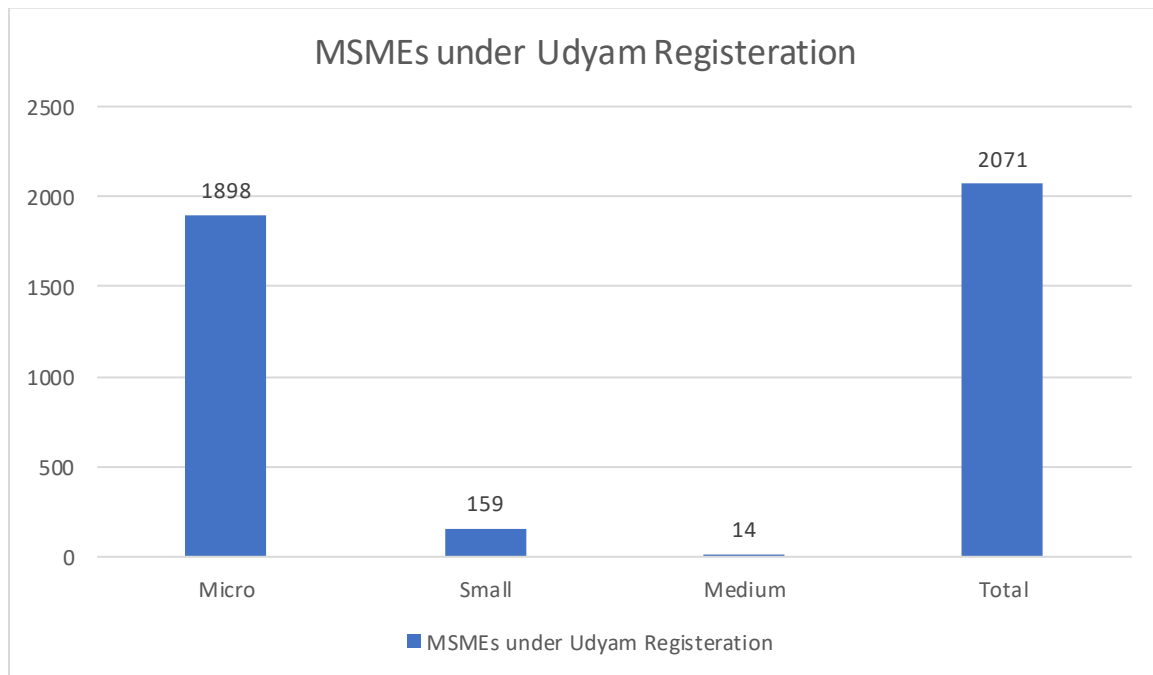
The Koppal has good connectivity with Roads, Rail, Air and Ports. The highlights of connectivity is given below:

- **Rail:** Bengaluru-Hospet--Ballari (Bellary) -Koppal-Hubballi (Hubli) Railway Line passes through Koppal Town. The district also have transportation facility for goods from Koppal and Munirabad railway stations
  - **Road:** Two national highways pass the district. Mangaluru-Sholapur National Highway 13 passes through Kushtagi town in the district. Ankola-Gooty National Highway 63 passes through Koppal town in the district.
  - **Air:** Koppal district is accessible to international airports such as Bengaluru, Mangaluru, Goa and Hyderabad. Additionally, domestic airport Hubballi airport is located at the distance of 165 kms from Koppal. Another domestic airport is 232 kms away from Koppal town
  - **Port:** Nearest seaport is Karwar which is located 165 kms away from the district. Other seaports include Goa and Mangaluru, at a distance of 332 km and 450 km respectively.
- ii. **Water Supplies:** Koppal has access to the Tungabhadra river flowing across the district through Gangavati, Koppal and Kushtagi taluks. This helps irrigating around 31% of the cultivable land in the region. Facilities such as groundwater, bore wells and dug wells are other facilities to supply water for irrigation.
- iii. **Power Supply:** Transmission to the Koppal district is done by Gulbarga Electricity Supply Company Limited (GESCOM). However, power generation is handled by various organizations like NTPC, KPCL and alternate sources like windmills in Koppal. District has 1 hydel power unit at Shivapura (Koppal Taluka), 1 Wind Power unit at Hanumansagar (Kushtagi Taluka) and 3 Biomass units in Gangavathi Taluka.

## 5.2 Industry<sup>8</sup>

There are 2071 MSME registered under Udyam Registration till 9th August 2021 in which Micro industries constitutes 1,898, Small Industries constitutes 159 and Medium Industries constitutes 14.

Figure 9 Overall MSMEs of Koppal district



Source: Udyam registration

## 5.3 Key Players

- i. Boruka Power Corporation Limited
- ii. Kirloskar Ferrous Industries Limited
- iii. Kalyani Steels Limited
- iv. Ultra Tech Cement Limited
- v. Xindia Steels Limited
- vi. MSPL Limited

<sup>8</sup> Udyam registration and Invest Karnataka

vii. Praxair India Private Limited

## 6 Industrial Areas/ Estates

### 6.1 Industrial Areas<sup>9</sup>

There is only one Industrial area in Koppal. The details of which is given below:

Table 6 Industrial Areas

Industrial Areas	
Name	Extent (acres)
Kushtagi Phase 1	38.04

### 6.2 Industrial Estates<sup>10</sup>

There is only one major industrial estate in Koppal with a total area of 30 acres. The details of which are given below:

Table 7 Industrial Estates

Industrial Estates	
Name	Extent (acres)
Gangavathi	30.00
<b>Total</b>	<b>30.00</b>

<sup>9</sup> <https://kiadb.karnataka.gov.in/kiadbgisportal/> and Invest Karnataka

<sup>10</sup> <http://kssidc.co.in/map/koppal.html>



## 7 SWOT Analysis of Koppal

### Strength

- Developed Infrastructure and Connectivity
- Presence of demanding Agri products like Paddy, Bajra, Maize, Jowar, Tur, Black gram, Green gram and Cowpea and Groundnut

### Weakness

- Lack of Awareness among exporters about how to exports, opportunities, procedures, marketing, branding
- Support required in marketing and promotion

## SWOT

### Opportunities

- Huge opportunity for iron, steel, tourism, artisan industry and Agri value added products.
- Presence of sector polices to back the invesment in the district

### Threat

- Competition from neighbouring states for investments

## 8 District as an Export Hub

During Independence Day speech in 2019, Hon'ble Prime Minister Shri Narendra Modi stated that each district of our country has a potential equal to that of one country. Every district has products and services which are being exported, and can be further promoted, along with new products / services, to increase production, grow exports, generate economic activity, and achieve the goal of AtmaNirbhar Bharat and Make in India.

The objective to develop Koppal as an export hub is to enable MSMEs and industry present there to get benefit of export opportunities in the overseas markets and shift focus on district led export growth for self-sufficiency and self-reliance. This will attract investment in the district to boost manufacturing and exports and provide ecosystem for innovation/ use of technology at district level to make the exporters competitive.

Products identified for Exports under the “Districts as an Export Hub” initiative for Koppal is given in the below Table 8:

*Table 8 Districts as an Export Hub products of Koppal*

Category	Products
<b>Agriculture</b>	Rice, Mango (Kesar and Alphonso), Guava pink, Papaya, Pomegranate.

## 9 Institutional Mechanism & Responsibility

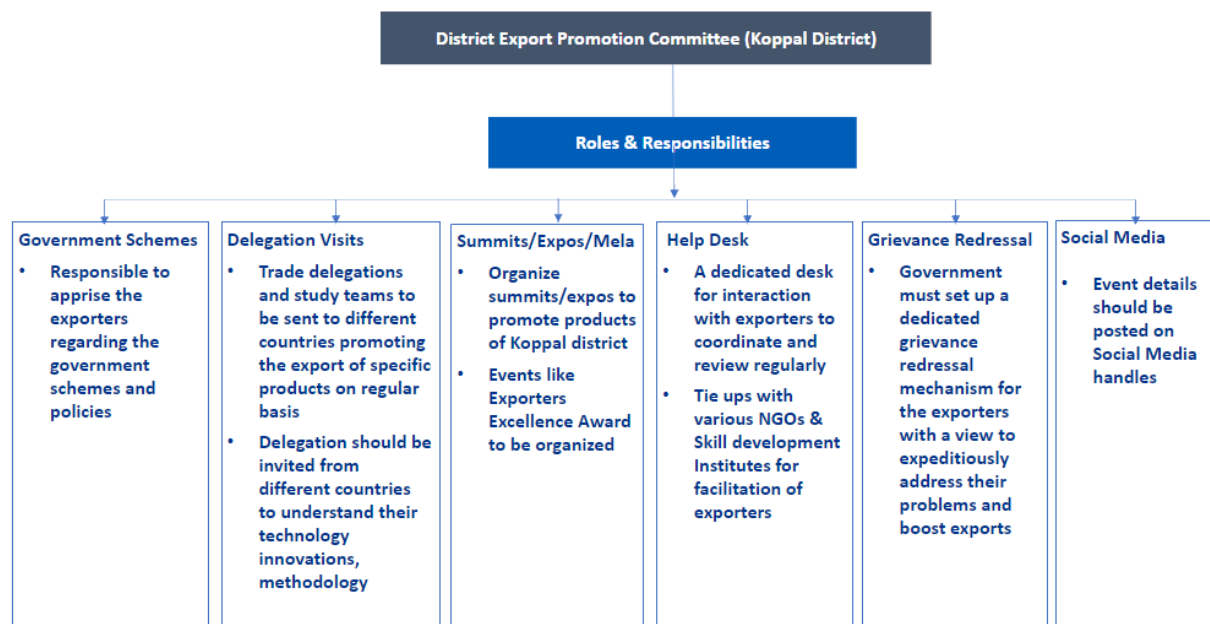
To ensure smooth functioning of district as export hubs, District Export Promotion Committees (DEPCs) need to be constituted in Koppal. These DEPCs shall be headed by DM/Collector/DC/District Development Officer of the district and co-chaired by designated officer from DGFT. The composition of the committee is illustrated below:

Table 9 Composition of the DEPC

S. No.	Representative from the respective departments	Position
1	DM/Collector/DC/District Development Officer of the District	Chair
2	Designated DGFT Regional Authority	Co-Chair
3	Agriculture Department	Member
4	Horticulture	Member
5	Livestock	Member
6	Fisheries	Member
7	Handicrafts	Member
8	Handlooms	Member
9	Industry	Member
10	Lead Bank Manager	Member
11	Export Promotion Councils	Member
12	Quality and Technical Standards Bodies	Member
13	MSME, Gol	Member
14	Heavy Industry, Gol	Member
15	Revenue, Gol	Member
16	Textiles, Gol	Member

The roles and responsibilities of DEPC is illustrated below:

Figure 10 Roles & Responsibilities of DEPC



## 10. Export Scenario

### 10.1 State Exports

In 2020-21, Karnataka has registered a merchandise export of worth USD 15.14 Bn, occupying a share of 5.2 percent in India's total merchandise exports. The last 2 years exports of India and Karnataka is given below:

Table 10 India and Karnataka Exports to world

Merchandise Exports (USD Bn)			
State	2019-20	2020-21	% Growth
All India	313.22	291.06	-7.10%
Karnataka	16.64	15.14	-9.00%

Source: DGCIS, 2021

## 10.2 District Exports

Major products that are being exported from Koppal are given below:

Category	Products
Agriculture	Rice, Pomegranate, Mango

The above products are being exported Saudi Arabia, Iran, Iraq, Nepal, China, UK, Singapore, Vietnam & Djibouti to mention. Export Performance of the existing products from Koppal and identified products is given in Table 11.

Table 11 Karnataka's Exports to world

Karnataka's Exports to world (In USD Mn.)			
S. No.	Product	2020-21	Major markets
1	Rice	61	Saudi Arabia, Iran, Iraq, Benin, Senegal, China, Vietnam & Djibouti
2	Pomegranate	0.05	UAE, Bangladesh, Qatar & Nepal
3	Mango	0.13	UAE, UK, Qatar and Singapore

**Source: DGCI&S, Kolkata, 2021**

It is evident from the above Table that exports of Rice has a good potential for exports.

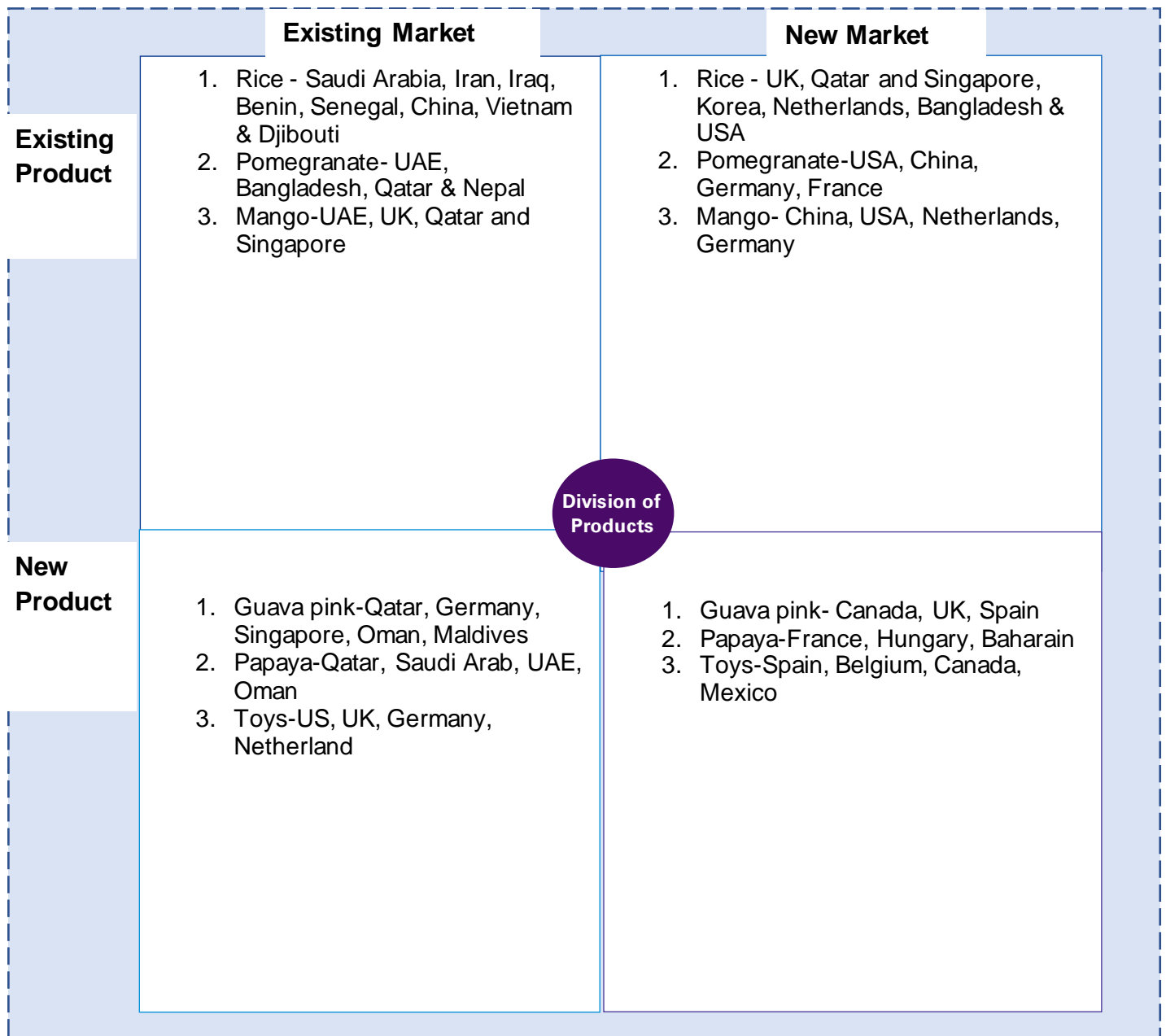
## 10.3 One District One Product (ODOP)

The crop identified by Karnataka State Agricultural Produce Processing and Export Corporation Limited (KAPPEC) & Dept. of I & C, Karnataka for One District One Product of Karnataka for Koppal is Guava and Toys.



## 10.4 Identification of District Export Basket

To promote exports from the State, there is a need to diversify the district's export basket, destinations and boost high value and value-added export products. For this study, following is the structure based upon the **Ansoff Matrix**, which is a strategic planning tool that provides a framework to help marketers devise strategies for future growth:



## 10.5 Product Export Promotion Strategy

- i. Organize training programmes/seminars to create awareness among exporters on importance of value addition, competitiveness, and quality
- ii. Setting up skilling centers for upgrading the skills of the farmers like how to improve the yield, quality and application of better techniques of post harvesting
- iii. Export Facilitation Center (EFCs) will set up at the District for
  - To provide end-to-end on-ground facilitation and handholding support to exporters
  - Investment facilitation
  - Grievance Redressal
  - Market Intelligence
- iv. The large corporate players in the district, should promote the district MSME suppliers in foreign markets as a part of their CSR activities.
- v. Organize Trade Fairs and Buyer-Seller meetings in emerging markets and non-traditional products
- vi. To provide marketing and branding support to the artisans, MSME's, entrepreneurs, exporters in terms of promotion of their products on Social media, e-commerce platforms and packaging of the products.

## 11 Promising Sector

To promote the district, it is important to identify promising and upcoming sectors based on the strengths of the district.

- **Iron & Steel**– Koppal has rich resources of iron ore which makes the sector promising sector of the district. The district is one of the largest iron ore deposit cluster which contributes to Karnataka's production of steel.
- **Agriculture** –Koppal is an agriculture-based economy with 2nd largest produce in the state such as Maize, Mango, Pomegranate, Guava. Koppal has good presence of rice mills in the district and makes it one of the potential sectors within the district.

## **12 Potential Investment Opportunities**

### **12.1 Opportunities in Toys**

The sector contributes towards government initiatives such as Make in India. Koppal has presence of toy manufacturing cluster' in district's Bhanapur village as well as Kinhal GI indicated toys. There has been growing local demand for high-end Indian made toys. The products have potential to explore ecommerce marketplaces as the marketplaces are supporting the local players to onboard and sell using online distribution networks for toys in the country. Toy has also been chosen for One district one product.

### **12.2 Opportunities in Iron and Steel**

The district has presence of iron ore deposits which is one of the key resources in steel production. This has been attracting investors from steel industries to set up industries in the district. The district has existing key players from the sector such as Kirloskar Ferrous Industries, Kalyani Steel Limited and Xindia Steels Limited.

### **12.3 Opportunities in Agriculture**

Koppal has wide range of agricultural products that are already being exported to different countries. Key agri-produce of the district such as Rice, Guava, and Mango are being exported to countries like UAE, EK, Singapore. District can target other countries as well where there is demand for these products and are being exported by other districts from Karnataka or other Indian states.

### 13 GI Product

Koppal district has a unique GI product “Kinal toys”. Using a special light weight wood, and natural paste made of tamarind seeds and pebbles, the toys are made by a community of craftsmen called chitragaras.

#### Uniqueness:

- i. Lightweight wood is used for the toys.
- ii. The paste used for joining the various parts is made of tamarind seeds and pebbles.
- iii. Jute rags, soaked, slivered into pieces, dried, powdered, and mixed with saw dust and tamarind seed paste is made into kitta.
- iv. A mixture of pebble powder paste with liquid gum is used for embossing the ornamentation and jewellery on the body of the figure.
- v. Once the components of the figure are assembled, kitta is applied by hand all over, and small pieces of cotton are stuck on it with the tamarind paste. O
- vi. ver this is applied the pebble paste which forms the base for the application of paint.



## 14 Strategy and Action Plan

Major initiatives and strategies, which will enhance exports from Koppal are detailed below:

Schedule	Categories	Strategies	Action Plan
Short & Medium Term	Skill Development	<ul style="list-style-type: none"> <li>• Organize outreach programs/ workshops for the farmers/exporters</li> <li>• Work towards continuous feedback from the farmers for understanding their perspective</li> <li>• Upskill the existing farmers for enhancing the production</li> <li>• Organize GI producing artisans and craftsmen in a Producers Organization.</li> </ul>	<ul style="list-style-type: none"> <li>• Concerned stakeholders to be invited to business events/workshops to help provide market linkages to exporters</li> <li>• DICs must make effective use of existing training institutes established by the State Govt. at district &amp; state level for imparting training in Agriculture products</li> <li>• Conducting dedicated workshop/webinar for the skill development in identified sectors such as Iron and Steel, Toys and agriculture.</li> <li>• The Agricultural Universities and Colleges located in the State are to be sensitized far providing best practices far the farmers to grow the quality produce of products like Mangos, Pomegranate.</li> </ul>



Schedule	Categories	Strategies	Action Plan
	Financial Assistance	<ul style="list-style-type: none"> <li>• Provide term loans to small and medium enterprises to enable them to upgrade export production capability</li> <li>• Assist exporters with pre-shipment and post-shipment credit</li> <li>• Smooth functioning of the exporters</li> </ul>	<ul style="list-style-type: none"> <li>• Information Dissemination about existing financial schemes which the MSMEs, exporters and other relevant stakeholders can avail which would facilitate in export promotion</li> <li>• Support smaller units in establishing their business through financial assistance</li> </ul>
	Marketing & Packaging Support	<ul style="list-style-type: none"> <li>• Adopt modern packaging technology which would reduce the packaging cost of the products</li> <li>• Marketing techniques to promote the exports of chilli, maize, mango and other Agri Products</li> </ul>	<ul style="list-style-type: none"> <li>• The district, with the help of Indian Institute of Packaging (IIP), to work towards improving the quality standards &amp; manufacturing compliances, learning new techniques &amp; technology and market intelligence. Parallely, tie up with NGO's to help the artisans in packaging and other activities</li> <li>• To enhance exports, it is imperative to provide training to the farmers for the adoption of innovative methods in the growth of quality Agri products.</li> <li>• Guava is the identified ODOP product, on which the district must focus with a vision to promote it at a global level.</li> </ul>

Schedule	Categories	Strategies	Action Plan
	Export Facilitation Cell	<ul style="list-style-type: none"> <li>• Grievance Redressal</li> <li>• Create Awareness</li> <li>• Market Intelligence</li> <li>• Share Best Practices</li> <li>• Policy Recommendations</li> </ul>	<ul style="list-style-type: none"> <li>• Provides market intelligence for exports</li> <li>• Export cell will analyze and suggest measures to strengthen the existing and establish new infrastructure facilities to promote the variety of Agriculture and Horticulture products, Toys.</li> <li>• The cell shall work towards establishing direct linkage between FPOs and Exporters for promoting the exports and the farming requirements for quality production</li> </ul>
Long Term	Branding and Promotion	<ul style="list-style-type: none"> <li>• Design logos for Agri products goods</li> <li>• Leveraging the power of social media</li> <li>• Leveraging e-commerce facilities</li> </ul>	<ul style="list-style-type: none"> <li>• Appoint an agency for designing of the logo and ensure only quality products use this logo which will ensure product differentiation</li> <li>• Tie up with various e-commerce players to market the products on their online platforms</li> </ul>
	Infrastructure	<ul style="list-style-type: none"> <li>• Agri Export Zones</li> <li>• Project Development Cell (PDC)</li> <li>• Quality testing and certification labs for exports</li> <li>• Uninterrupted Power Supply</li> </ul>	<ul style="list-style-type: none"> <li>• Set up an Agri Export Zone in Koppal district for Rice, Pomegranate, mango and other Agri products</li> <li>• Under PDC, the district shall facilitate investments in a timely and targeted manner. Provide</li> </ul>

Schedule	Categories	Strategies	Action Plan
		<ul style="list-style-type: none"> <li>• Mega Food Parks</li> <li>• Logistical infrastructure should be developed</li> </ul>	<p>necessary support on the issues faced by investors to finalize their investment plans</p> <ul style="list-style-type: none"> <li>• Possibility of providing independent feeders for power supply for such clusters shall be examined, in consultation with the State Governments, so that uninterrupted power supply could be ensured</li> <li>• Encourage local industry players to become exporters by providing a conducive environment in the district</li> <li>• Mega food parks should include creation of processing infrastructure near the farm, transportation, logistics and centralized processing centers. This would facilitate food processing units to meet environmental and safety standards</li> </ul>
	Policy/ Regulatory Reforms	<ul style="list-style-type: none"> <li>• Capitalizing on the TIES scheme to support the export logistics</li> <li>• Online single window system (No physical touchpoints between the</li> </ul>	<ul style="list-style-type: none"> <li>• Identification of relevant projects to address the gaps in infrastructure which are not addressed by any other scheme.</li> <li>• Encourage investor/ entrepreneur to apply for all the</li> </ul>

Schedule	Categories	Strategies	Action Plan
		applicant and department from the time of application process till the final decision)	licenses/approvals through the online single window portal. Single Window System should be integrated with SMS gateway/ emails so that applicant gets notification at every critical stages of application processing

## **Annexures**

- a. List of Exporters
- b. List of MSMEs
- c. List of Warehouse